

18/20 STAMFORD STREET STALYBRIDGE CHESHIRE TEL: 0161 338 2292

Website: [www.wcdawson.com](http://www.wcdawson.com) Email: [reception@wcdawson.com](mailto:reception@wcdawson.com)



## Coniston Drive, Stalybridge, SK15 1EE

Dawsons are pleased to bring to market this three bedroom property with gardens to front and rear. The property is situated within easy reach of local amenities and is ideally suited to a wide range of prospective purchasers, offered for sale with no forward vendor chain we would highly recommend interested parties view at their earliest convenience.

**Price £175,000**

# Coniston Drive, Stalybridge, SK15 1EE

- No vendor chain
- Excellent commuter links
- Three bedroom property
- Gardens to both front and rear
- Close to local amenities
- Internal inspection highly recommended

## GROUND FLOOR

### Hallway

uPVC front door to front, door leading to:

### Reception Room

11' x 16' (3.35m x 4.88m )  
uPVC double glazed window, gas central heating radiator, fireplace, door to:

### Kitchen/ Diner

15' x 8' (4.57m x 2.44m )  
uPVC double glazed window, fitted with a range of wall and base units with worksurface over, tiled splashbacks, space for cooker, plumbing for automatic washing machine, stainless steel sink with mixer tap, gas central heating radiator, space for dining table, uPVC double glazed rear door leading to garden.

### Bedroom 1

10' x 13' (3.05m x 3.96m )  
uPVC double glazed window, gas central heating radiator.

### Bedroom 2

12' x 9' (3.66m x 2.74m )  
uPVC double glazed window, gas central heating radiator.

### Bedroom 3

7' x 10' (2.13m x 3.05m )  
uPVC double glazed window, gas central heating radiator.

### Externally

Front garden, rear garden with brick outhouse.

### N.B.

Please note that the property's boiler is currently not in working order and may require replacement. The property has been priced to reflect this.

## FIRST FLOOR

### Landing

Access to boarded loft with electric light, doors to:



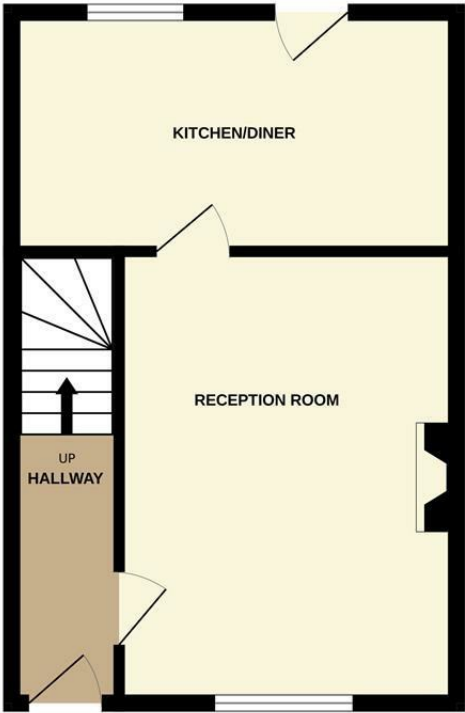
## Directions



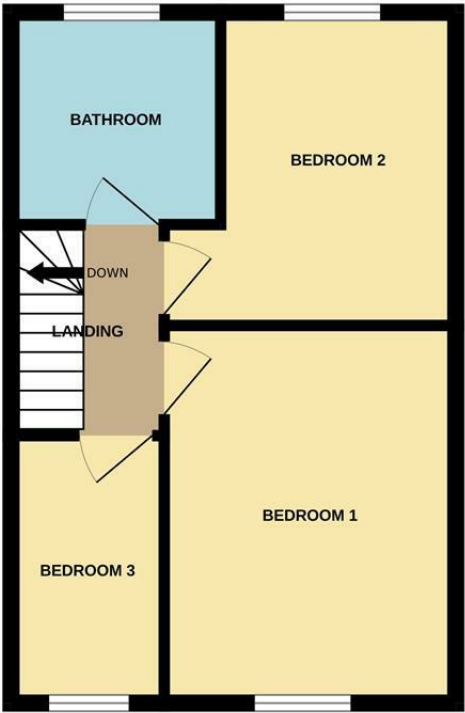


Floor Plan

GROUND FLOOR



1ST FLOOR



Whilst every attempt has been made to ensure the accuracy of the floorplan contained here, measurements of doors, windows, rooms and any other items are approximate and no responsibility is taken for any error, omission or mis-statement. This plan is for illustrative purposes only and should be used as such by any prospective purchaser. The services, systems and appliances shown have not been tested and no guarantee as to their operability or efficiency can be given.  
Made with Metropix 6/2025

These particulars, whilst believed to be accurate are set out as a general outline only for guidance and do not constitute any part of an offer or contract. Intending purchasers should not rely on them as statements of representation of fact, but must satisfy themselves by inspection or otherwise as to their accuracy. No person in this firms employment has the authority to make or give any representation or warranty in respect of the property.

